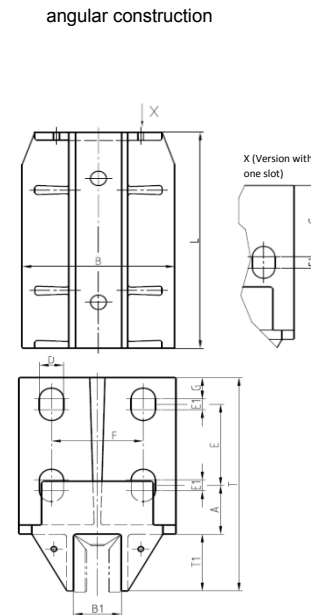
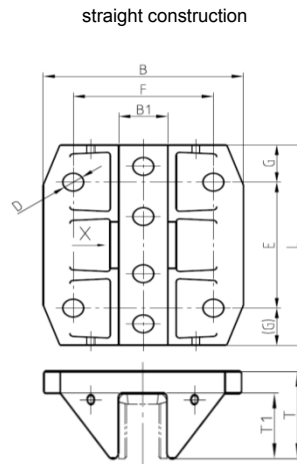


Guide holders made of Plastic or Aluminium



Size	Part-No.	Material	Dimensions (mm)											Weight (kg)
			L	B	B1	T	T1	E	E1	F	G	D	A*)	
HSMK 100	780300108	Plastic	100	75	20	35	29	60	-	42	20	8,5	-	0,08
HSM 140	780300102	Plastic	140	120	29,5	40	30	88	-	84	26	12,5	-	0,20
HSMK 100	780300008	Aluminium	100	80	20	35	30	60	-	42	20	8,5	-	0,16
WSMK 100	780300001	Aluminium	100	80	20	100	30	-	14	50	22,5	11	35	0,42
HSM 140	780300002	Aluminium	140	120	29,5	40	30	88	-	84	26	12,5	-	0,41
WSM 140	780300003	Aluminium	140	120	29,5	105	30	-	12,5	84	30	12,5	38,5	0,82
HSML 180	780300004	Aluminium	180	120	36,5	65	49	128	-	84	26	12,5	-	1,00
WSML 180	780300005	Aluminium	187	120	36,5	184	49	70	10	70	23	18,5	42	1,47
HSMEL 300	780300012	Aluminium	300	150	36,5	58	38	2 x 110	-	100	40	17	-	6,80
WSMEL 300	780300006	Aluminium	300	260	36,5	252	38	125	5	210	30	17	59	6,00

A*) : Distance to the centre of the hole / slot



P+S Polyurethan-Elastomere



P+S Polyurethan-Elastomere
GmbH & Co.KG

Kielweg 17
49393 Diepholz

telephone 05441 / 5980-0
fax 05541/ 5980-88

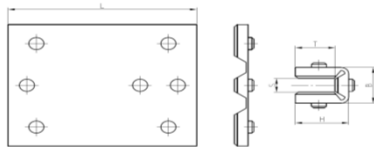
e-mail: info@pus-polyurethan.de
website: www.pus-polyurethan.de

Guide holder inserts made of Polyurethan (PU), Polyethylen (PE),
Polyethylen with elastic Vulkocell®-insert (PEC), Diepotex (DT) und Diepotex with Graphitaddition (DT-GF)

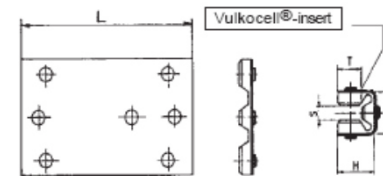


Size	Part-No. for PU	Part-No. for PE	Part-No. for PEC	Part-No. for DT	Part-No. for DT-GF	Dimensions (mm)					Configuration	
						L	S	H	T	B		
EK	5 - 100	780308001	780309001	780310005	780311001	780311031	100	5,5	30	25	20	K
EK	9 - 100	780308002	780309024	-	780311002	780311032	100	9,5	30	25	20	K
EM	8 - 140	780308018	780309008	-	780311018	780311038	140	8,5	30	23,5	28,5	K
EM	9 - 140	780308005	780309007	780310007**	780311005	780311035	140	9,5**(9)	30	23,5	28,5*(29,5)	K
EM	10 - 140	780308012	780309006	-	-	-	140	10,5	30	23,5	28,5	K
EM	14 - 140	780308008	780309010	780310010**	-	-	140	14,5**(14)	30	23,5	28,5*(29,5)	K
EM	16 - 140	780308009	780309012	780310012*	780311009	780311039	140	16,5	30	23,5	28,5*(29,5)	K
EL	14 - 180	780308010	-	-	-	-	180	14,5	50	40	36,5	K
EL	16 - 180	780308011	780309014	780310014**	-	-	180	16,5**(16)	50	40	36,5	K
EL	19 - 180	-	780309023	-	-	-	180	19,5	50	40	36,5	K
EEL	16 - 300	-	780313003	-	-	-	300	16,5	38	28	36,5	K*(U)
EEL	19 - 300	-	780313008	-	-	-	300	19,5	38	28	36,5	K
EM	20 - 300	-	780313005	-	-	-	300	20,5	38	28	36,5	K
EM	28 - 300	-	780313009	-	-	-	300	28,5	42	36,4	40,2	K

foldable construction



foldable construction with Vulkocell insert



P+S Polyurethan-Elastomere